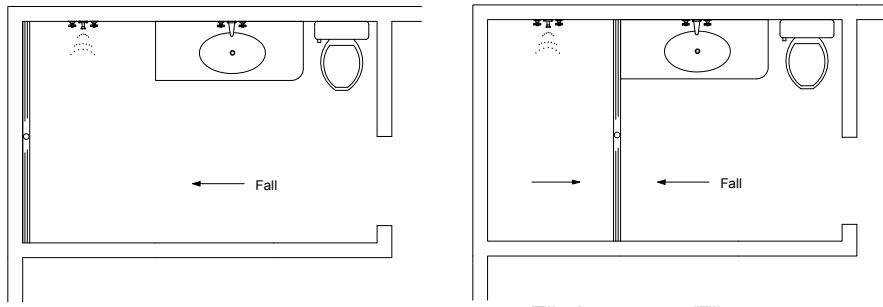


65Tii25/30 MTL & CO Bathroom over 1200mm

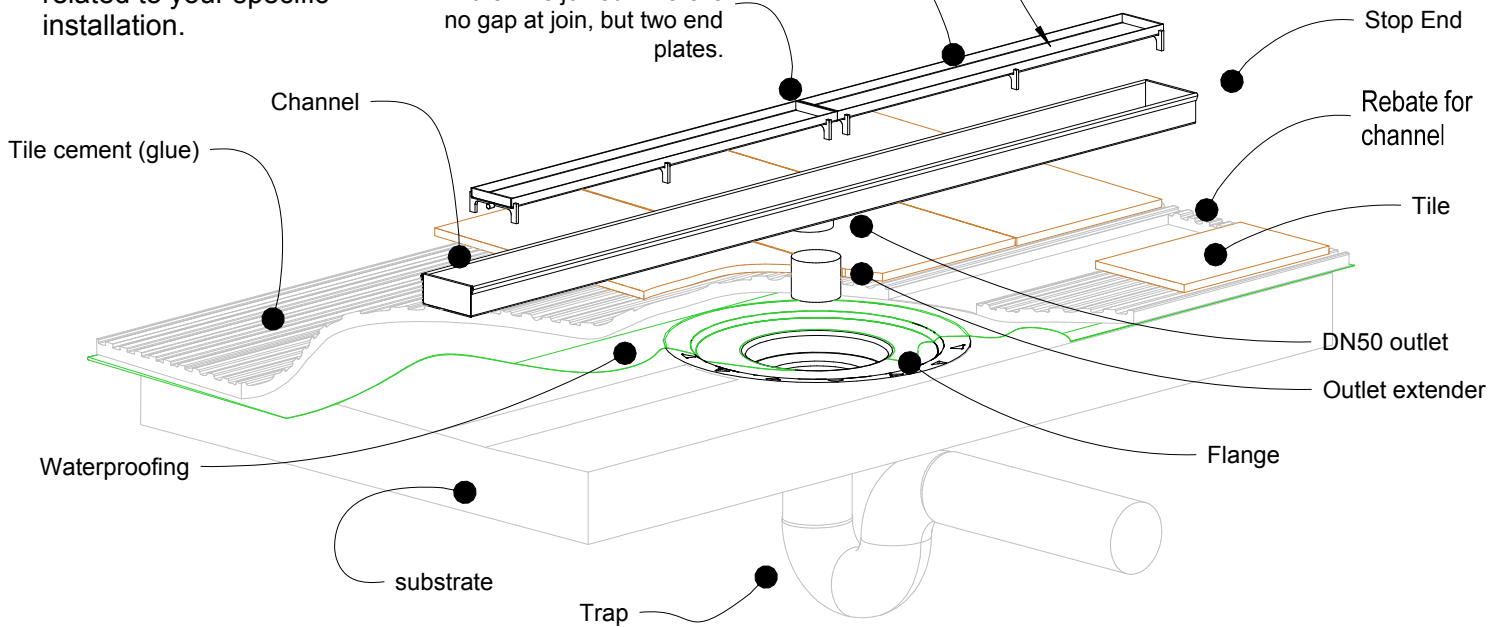
For 65TRTii25MTL, 65TRTiiCO25, 65Tii30MTL
65TiiCO30.



Cut tile to width and fix into tray. To ensure no metal contamination causes spalling below the tile. It is recommended to use a paint-on waterproof membrane on the interior of the tile insert tray before tiling to ensure no contaminants are trapped below against the stainless.

NOTE, refer to AS3500 for specific outlet pipe sizes related to your specific installation.

For lengths over 1200mm the Ti is joined. There is no gap at join, but two end plates.



NOTE, this method requires the channel system to be ABOVE and SEPARATE from the WATERPROOFING.

